



British-Georgian  
Academy



# SCHOOL UNIFORM POLICY

# School Uniform Policy

*School uniforms have many benefits including but not limited to creating cohesion in the school community and developing professionalism. BGA students are expected to represent themselves and the school in a positive way at all times. Part of that is meeting the communities' guidelines in terms of their appearance. Appropriate dress means wearing clothes that are sensitive to multicultural norms and do not lead to any offence.*

**Students are expected to wear the designated school uniform at all times, unless indicated by the teacher or administration for special events or field trips.**

**Students arriving at school not wearing the appropriate uniform will be warned verbally and formally on Edupages. Repeated infringements of the policy will lead to formal communication via email and parents/guardians may be asked to bring appropriate uniform to school before a student is allowed to join their class for the day.**

## **GIRLS**

- Full trousers or shorts of an appropriate length\*\* – navy blue
- Polo or cotton buttoned shirt with BGA logo - white
- Cardigan/jumper/vest/hoodie with BGA logo – navy blue
- Navy blue/Neutral coloured tights
- Dress/pinafore with BGA logo of an appropriate length\*\* – navy blue
- Skirt of an appropriate length\*\* – navy blue

## **BOYS**

- Full trousers or shorts of an appropriate length\*\* – navy blue
- Polo or cotton buttoned shirt with BGA logo – white
- Cardigan/jumper/vest/hoodie with BGA logo – navy blue

*\*Appropriate in this sense applies to age group and for the activities planned for that school day. For secondary students, we encourage them to be attired in a way that could be described as appropriate for the 'world of work' beyond school.*

*\*\*"C above the knee" can be used as a general guide for the length of shorts or skirts. Meaning the student should be able to connect the bottom of their shorts/skirt with the top of their knee using their thumb and first finger whilst making a C shape.*

*Some of the uniform items can be purchased through the school at the school administrative office. Alternatively, the British-Georgian Academy logo/crest is available for purchase at the school administrative office. This logo can be ironed on to the jumper/cardigan/shirt.*



**It is the school's expectation that students are appropriately\* dressed, have appropriate\* hairstyles and limited jewellery. This is for reasons of health and safety and to ensure that students portray a positive image of themselves and the school.**

**Students should be wearing BGA house PE shirts, available from the school office, for PE lessons.**

## **BOYS:**

**• All students must come to school with a white polo shirt or white cotton shirt with the school logo on it. If a student is wearing a cotton shirt, all the buttons (apart from the top button) must be done up at all times. No denim shirts, shirts with stripes, patterns or logos.**



**• If students choose to wear a jumper, hoodie, cardigan, blazer etc. it must be navy/dark blue with the school logo and no other logos or branding**



- Trousers must be tailored/smart dark/navy blue. Tracksuit bottoms, jeans, and cargo trousers are not part of the school uniform.



- If a student chooses to wear shorts, they must also be tailored/smart shorts that are dark-/navy blue and of an appropriate length, an appropriate length will be defined by whether the student can make a C above the knee, meaning that the student can connect the bottom of their shorts with the top of their knee with their thumb and first finger whilst making a C shape. No football/sports shorts, tracksuit-style shorts or cargo shorts.



## GIRLS:

- All students must come to school with a white polo shirt or white cotton shirt with the school logo on it. If a student is wearing a cotton shirt, all the buttons (apart from the top button) must be done up at all times. No denim shirts, shirts with stripes, patterns or logos.



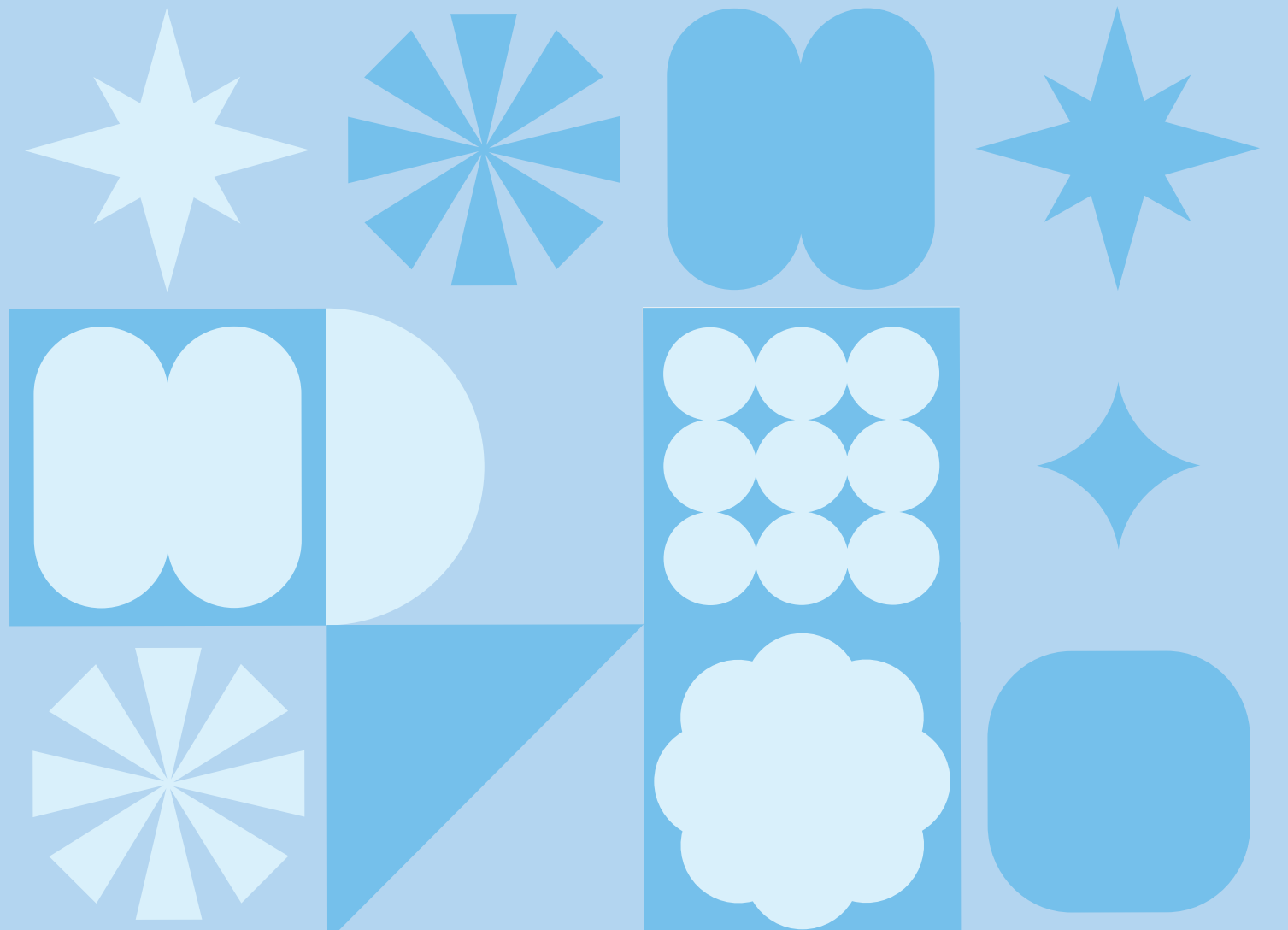
- If students choose to wear a jumper, hoodie, cardigan, blazer etc. it must be navy/dark blue with the school logo and no other logos or branding.



**. Trousers must be tailored/smart dark/navy blue. Tracksuit bottoms, jeans, cargo trousers and leggings/tights are not part of the school uniform.**



**. Plain dark/navy blue skirts and shorts of an appropriate length may also be worn. An appropriate length is deemed to be whether the student can make a “C above the knee”, meaning that the student can connect the bottom of their shorts/skirt with the top of their knee with their thumb and first finger whilst making a C shape. No football/sports shorts, gym wear/leggings tracksuit-style shorts, cargo shorts or patterns.**





[www.bga.ge](http://www.bga.ge)

BRITISH-GEORGIAN ACADEMY  
Leo Kvachadze 17 (LISI LAKE AREA)  
(995 32) 2 251 253; 2 294 295